

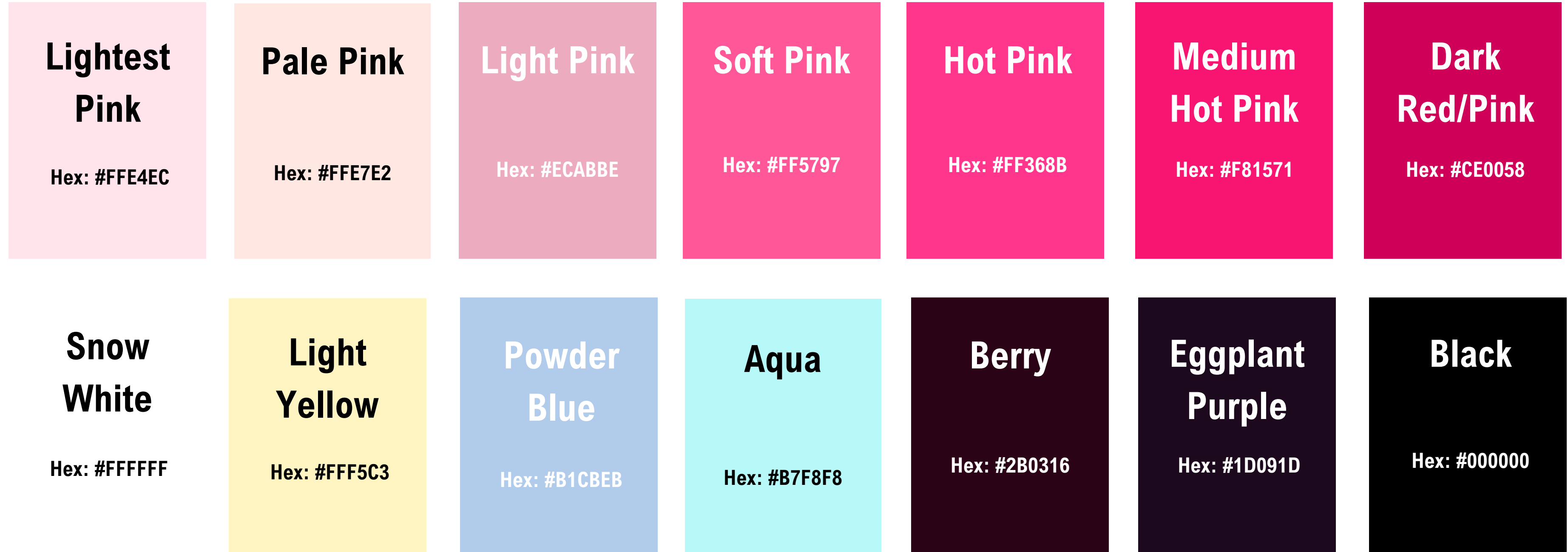


LILLEE JEAN
PRODUCTIONS

Lillee Jean Productions

Brand Guidelines

Primary



Lillee Jean Productions Logo image color swatches.

Lillee Jean Trueman website (www.lilleejean.com / www.projectbullyish.com) brand colors.

Graphics palette used for social media profiles of Lillee Jean Trueman.

All color schemes created by Lillee Jean Trueman, color selection by Lillee Jean Trueman. Color themes by Lillee Jean Trueman.

Primary

Golden

Hex: #F2A34E

**Cinnamon
Brown**

Hex: #914C1E

**Orange
Red**

Hex: #F02D40

Red

Hex: #D30A10

**Frenchie
Blue**

Hex: #68B0F7

**Forest
Green**

Hex: #122F32

Lillee Jean Productions Logo image color swatches.

Lillee Jean Trueman website (www.lilleejean.com / www.projectbullyish.com) brand colors.

Graphics palette used for social media profiles of Lillee Jean Trueman.

All color schemes created by Lillee Jean Trueman, color selection by Lillee Jean Trueman. Color themes by Lillee Jean Trueman.

Primary Font

Quotes Script

ABCDEFGHIJKLMNOPQRSTUVWXYZ12345678910@?!

Lillee Jean Productions Logo

Secondary Font

Amsterdam Two

ABCDEFGHIJKLMNOPQRSTUVWXYZ12345678910@?!

Lillee Jean Productions Logo

Primary Font

Agrandir Narrow

ABCDEFGHIJKLMNOPQRSTUVWXYZ12345678910@?!

ABCDEFGHIJKLMNOPQRSTUVWXYZ12345678910@?!

Lillee Jean Productions Logo

Secondary Font

Amsterdam Four

ABCDEFGHIJKLMNOPQRSTUVWXYZ12345678910@?!

Lillee Jean Productions Logo

Primary Font

Libre Baskerville

ABCDEFGHIJKLMNOPQRSTUVWXYZ12345678910@?!

ABCDEFGHIJKLMNOPQRSTUVWXYZ12345678
910@?!

Helvetica

ABCDEFGHIJKLMNOPQRSTUVWXYZ12345678910@?!

ABCDEFGHIJKLMNOPQRSTUVWXYZ12345678910@?!

Lillee Jean Productions Website

Secondary Font

Arial

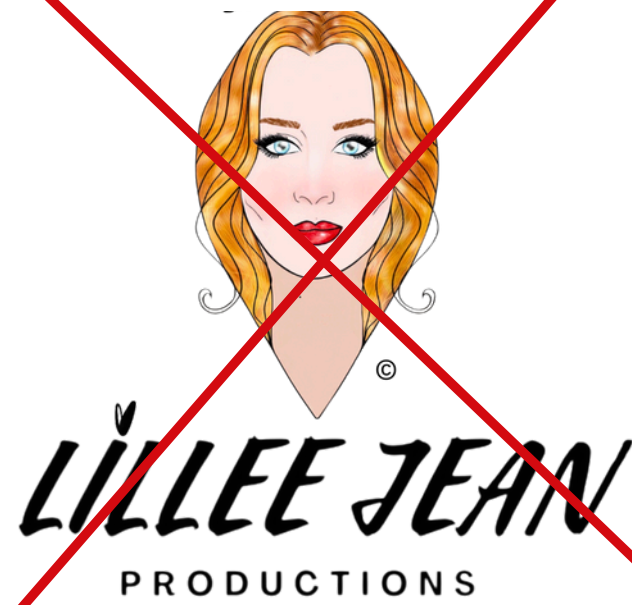
ABCDEFGHIJKLMNOPQRSTUVWXYZ12345678910@?!

ABCDEFGHIJKLMNOPQRSTUVWXYZ12345678910@?!

Lillee Jean Productions Website

Sole ownership of illustrated logo, and accompanied "Lillee Jean" with a illustrated heart and "Productions" is Lillee Jean Trueman. No usage is authorized without written consent.

Do Not Alter Logo.



Do Not Stretch Logo or Transform Logo.



Do Not Rotate the Logo.



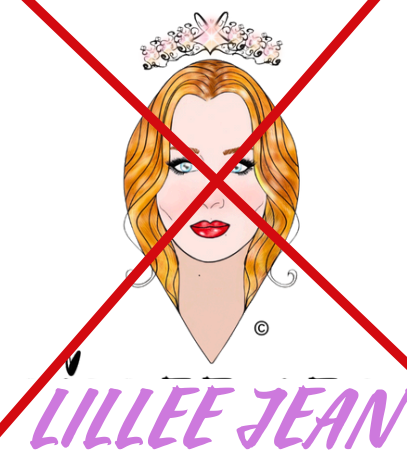
Do Not Use Low Contrast, Or Conflicting Color Combinations.



Do Not Recreate the Logo.

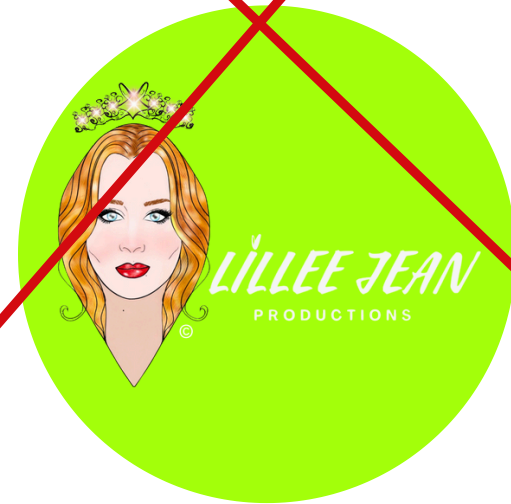


Do Not Use Unapproved Colors In the Logo.



Sole ownership of illustrated logo, and accompanied "Lillee Jean" with a illustrated heart and "Productions" is Lillee Jean Trueman. No usage is authorized without written consent.

Do Not use Color Versions of the Logo.



Do Not Change Font.

LILLEE JEAN
PRODUCTIONS

Do Not Distort Logo.



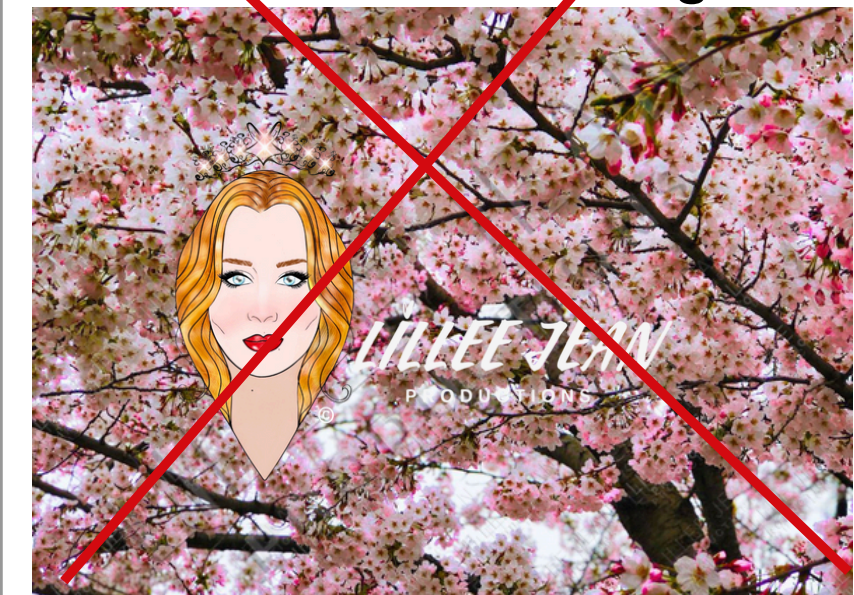
Do Not Cut Logo.



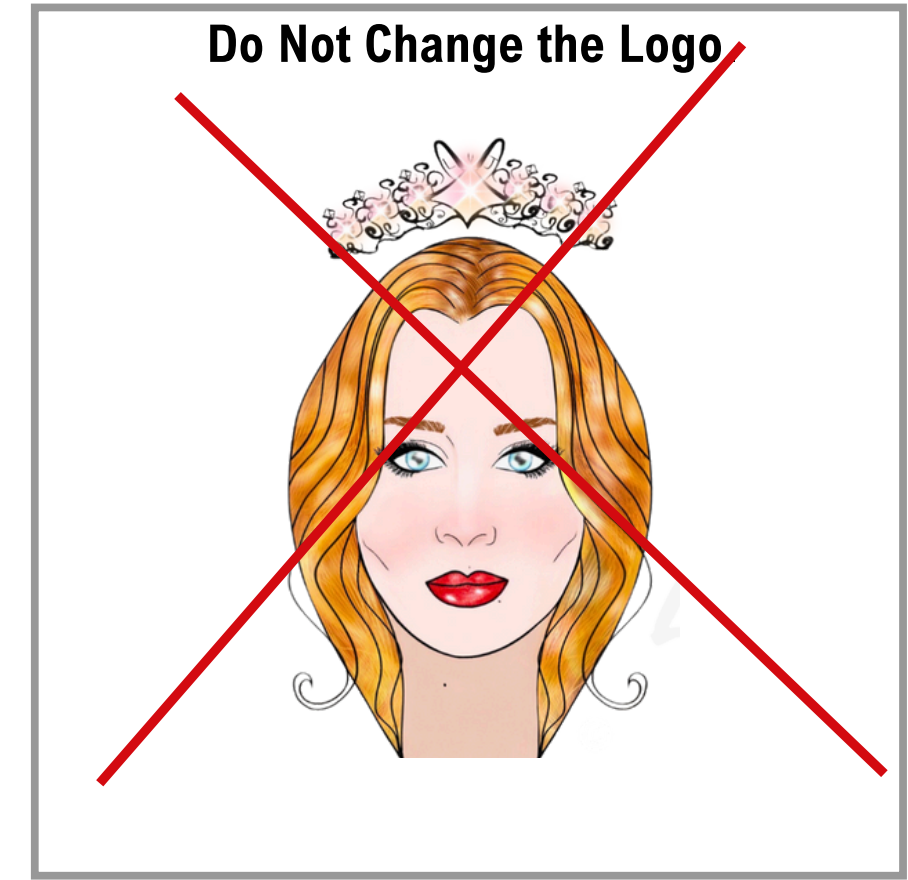
Do Not Desaturate Logo.



Do Not Add Background Unauthorized To Logo.



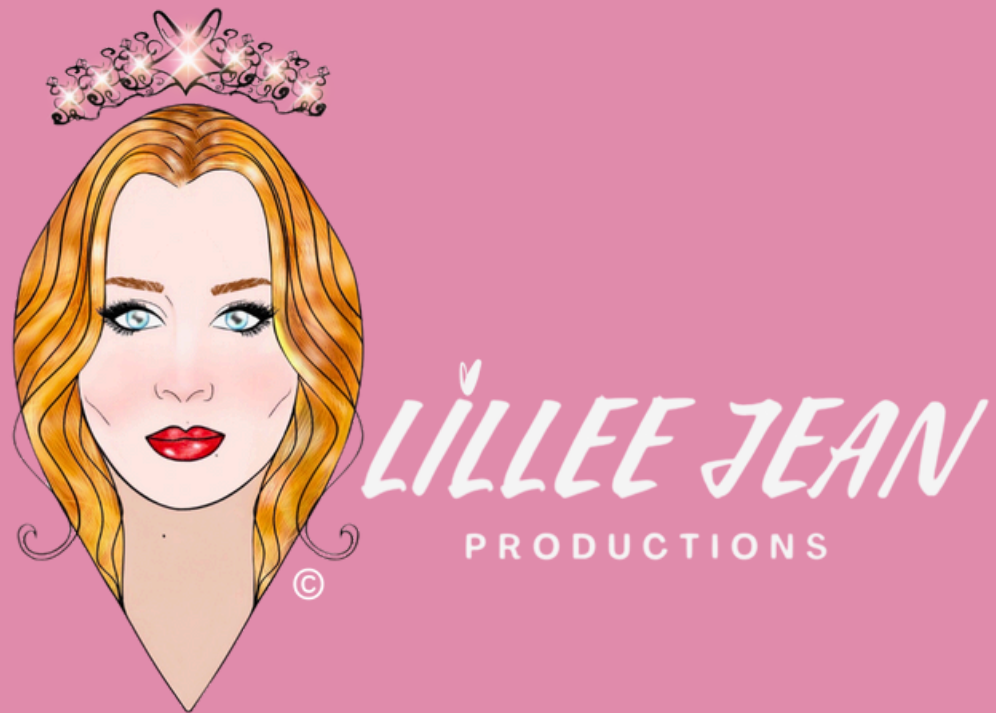
Sole ownership of illustrated logo, and accompanied “Lillee Jean” with a illustrated heart and “Productions” is Lillee Jean Trueman. No usage is authorized without written consent.



Sole ownership of illustrated logo, and accompanied "Lillee Jean" with a illustrated heart and "Productions" is Lillee Jean Trueman. No usage is authorized without written consent.



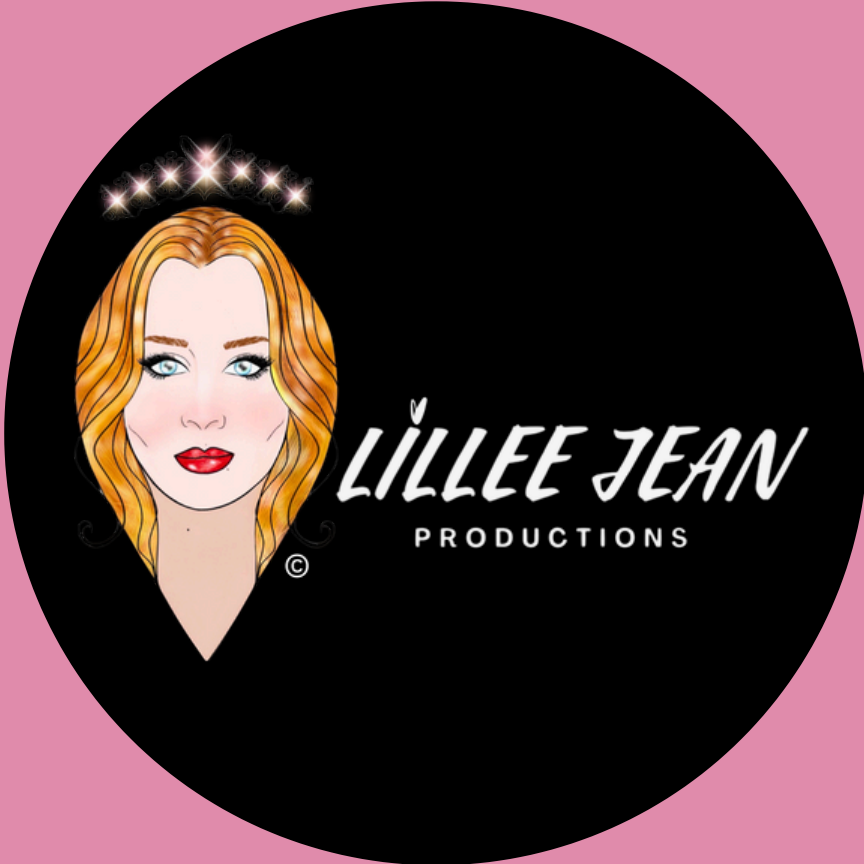
Sole ownership of illustrated logo, and accompanied "Lillee Jean" with a illustrated heart and "Productions" is Lillee Jean Trueman. No usage is authorized without written consent.



LILLEE JEAN
PRODUCTIONS



Sole ownership of illustrated logo, and accompanied "Lillee Jean" with a illustrated heart and "Productions" is Lillee Jean Trueman. No usage is authorized without written consent.



Lillee Jean
beauty

Lillee Jean LIVE
TALKS

LILLEE JEAN
PRODUCTIONS

PROJECT
Bullyish
Lillee Jean

Lillee Jean
TALKS LIVE
A LILLEE JEAN PRODUCTION

Lillee Jean
MIND OVER BEAUTE

**Style
Your
Lillee**

VOYAGER

With Lillee Jean

SO LILLO QUI?

LILLEE JEAN PRODUCTIONS
LILLEE JEAN PRODUCTIONS
LILLEE JEAN PRODUCTIONS
LILLEE JEAN PRODUCTIONS
LILLEE JEAN PRODUCTIONS
LILLEE JEAN PRODUCTIONS
LILLEE JEAN PRODUCTIONS
LILLEE JEAN PRODUCTIONS
LILLEE JEAN PRODUCTIONS
LILLEE JEAN PRODUCTIONS
LILLEE JEAN PRODUCTIONS
LILLEE JEAN PRODUCTIONS

Lillee Jean

LILLEE
JEAN
PRODUCTIONS

All images are copyrighted © 2015-2024 Lillee Jean Trueman.

In accordance with the copyright laws, any and all images appearing on the Lillee Jean website, www.LilleeJean.com, all social media pages associated with Lillee Jean, consisting of but not limited to Facebook, Twitter, Instagram, Pinterest, and YouTube, as well as any images photographed and captured are the exclusive property of Lillee Jean and are protected under the United States and International Copyright laws.

Copyright and ownership of images taken by Lillee Jean will always be retained by Lillee Jean Trueman (Lillee Jean). Unless given written authorization, the site user is forbidden by law from copying any images created by Lillee Jean Trueman (Lillee Jean).

The images may not be reproduced, printed, copied, transmitted, or manipulated without the written permission of Lillee Jean Trueman (Lillee Jean). The use of any image as the basis for another photographic concept, illustration, or reproduction (digital, artist-rendered, or alike) is a violation of the law and is strictly prohibited.

Unless otherwise noted, the content of this site, Www.LilleeJean.com, (text, audio, visual media, motion picture, and image) is copyrighted by Lillee Jean Trueman (Lillee Jean Beauty Inc.). All Rights Reserved, and protected under U.S. Copyright law. For more information about the Copyright Act, making copies, and locating a copyright owner, scroll down to the appropriate section.

Several pieces are registered with the U.S. Copyright Office and can be searched accordingly. All rights are reserved.

Main Catalog: Sole ownership of illustrated logo, and accompanied “Lillee Jean” with a illustrated heart and “Productions” is Lillee Jean Trueman. No usage is authorized without written consent.

Catalog 1: Sole ownership of illustrated logo, and accompanied “Lillee Jean” with a illustrated heart and “Productions” is Lillee Jean Trueman. No usage is authorized without written consent.

Catalog 2: Sole ownership of illustrated logo, and accompanied “Lillee Jean” with a illustrated heart and “Productions” is Lillee Jean Trueman. No usage is authorized without written consent.

EXAMPLE WORKS

- **Purple Space Chick. -Registration Number: VA0002323197**
- **Holiday Angel Elf. - Registration Number: VA0002322467**
- **Timeless But Forward. - Registration Number: VA0002319224**
- **Lillee Jean 2019. - Registration Number: VA0002322490**
- **Queen Lillee**
- **Claimant FOR ALL: Lillee Jean Trueman.**

Lillee Jean Productions

Brand Guidelines

Kit created by Lillee Jean Trueman.